

Support for Boatmark

Rt Hon John Denham MP, Home Office

"Crooks are using increasingly more sophisticated methods to commit crime, and we must harness technology too if we are to catch them. The Boatmark scheme, by using state-of-the-art electronic tags, will act as a powerful deterrent to criminals, making it less attractive to steal marine craft and easier to recover and return them to their rightful owners."

John Scott, Assistant Chief Constable of Northumbria Police Force and chair of ACPO Diving and Marine Group

"This scheme will be a real advantage to police officers in the marine environment and a deterrent to those engaged in the theft and handling of stolen boats. The ability to remotely access a secure identification number and uniquely identify a boat, will increase the chance of thieves being caught and boats being returned to their rightful owner."

**Telephone: 01722 413346
Fax: 01722 412746**



Electronic Boat Security

Every day, 10-20 small boats and other leisure craft are stolen in the UK - and annual losses for boat owners and the UK boating industry exceed £40m per annum.

Now, the British Marine Federation and HPI have teamed up to bring you the **new Boatmark**. Using an electronic tag, backed by the UK's leading independent database of mobile assets, you can make your boat and its fittings less attractive to thieves - and increase the chances of recovery if the worst happens.



The New Boatmark: making life difficult for the thief

The innovative *new Boatmark* scheme works on a simple principle: if a thief can't conceal the true identity of stolen property, then he can't cover his tracks.

New **Boatmark** has the answer, a scheme backed by the Home Office's Chipping of Goods Initiative, and gaining favour with leading boat builders. By securely embedding an electronic tag within the hull's structure, pre-programmed with the same industry standard Hull Identification Number marked onto the boat itself, Boatmark makes it almost impossible to destroy a boat's original identity. Scanners to read the tags are available to the police and other authorised investigators.

The information carried on the tag is recorded on HPI's **Boatmark** database, which can also store the serial numbers of other valuable pieces of equipment fitted to the boat. So if a thief steals your outboard rather than your boat, **Boatmark** will be able to tell the police where it came from.

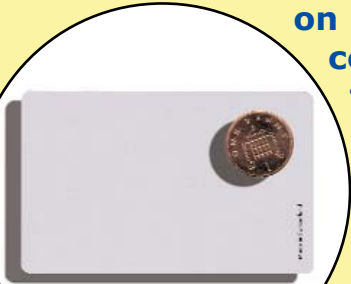
Craft which are recorded on the **Boatmark** database also receive a registration document confirming keeper details. When the time comes to sell, a call to Boatmark will help to reassure your buyer that your boat is accurately described, and that it isn't stolen or subject to outstanding finance.

Available for you to fit

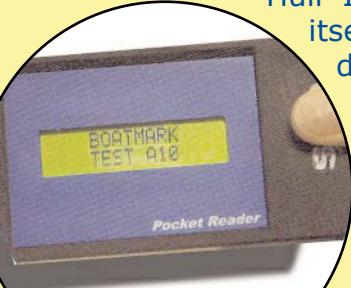
Now, you can have all the benefits of the new Boatmark scheme - even if your boat isn't brand new.

The electronic Boatmark kit can be fitted easily and contains everything needed to mark and tag a boat and record its identity with the Boatmark scheme. No specialist skills are required, and fitting the kit should take no more than an hour.

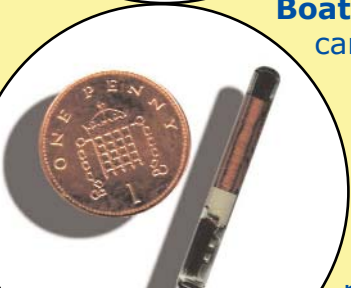
The kit contains a set of unique numbers, easily and permanently fixed. Some are designed to be clearly visible and to act as a visible deterrent to would-be thieves. At least one label is for careful concealment. **All the numbers in the kit are identical.** Also included is either an electronic glass tag, easily fitted with a drill, or an electronic credit card style tag easily bonded to the structure of the boat (see left). Both types of tag can be installed within the hull or glued in a hidden position inside it.



Card Tag



Hand Scanner



Glass Tag



For further information and stockist details please contact - Boatmark, Dolphin House, New Street, Salisbury, SP1 2PH.

Telephone: 01722 413346
Fax: 01722 412746

