

RCD requirements for boats of length from 2.5 – 24m

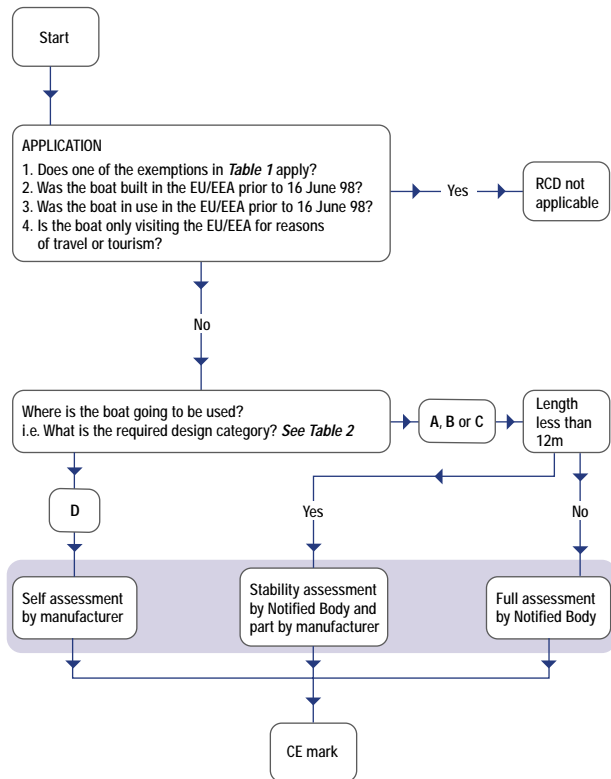


Table 1

MAIN EXCLUSIONS

- Craft labelled as intended solely for racing.
- A canoe, kayak, gondola or pedalo.
- A sailing surfboard.
- A powered surfboard, personal watercraft* or other similar powered craft.
- Original and individual replica of historic craft designed before 1950.
- Experimental craft not subsequently placed on the community market.
- Craft built for own use not placed on the market within 5 years.

*soon to be included

Table 2

BOAT DESIGN CATEGORIES

A OCEAN B OFFSHORE C INSHORE D SHELTERED

The CE Mark and what to look for when buying a boat

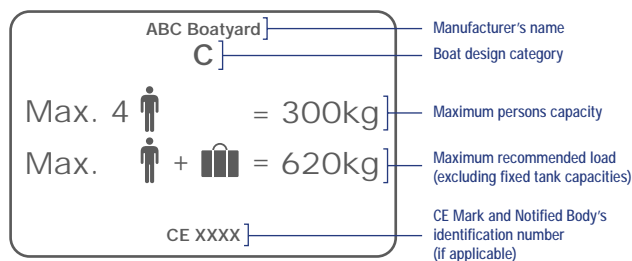
Although not all European-led legislation has been welcome, the EU Recreational Craft Directive (the RCD) has given buyers of new or recently built secondhand boats, useful, upfront information. So, if you are looking to buy such a boat, this what to look for.

RYA
www.rya.org.uk



Builder's Plate

Every new boat when sold or put in service in the EU since June 1998 should display a builder's plate showing the following information:-



Boat Design Category

This is primarily related to the stability or, for small dinghies, the recoverability of the boat and will be one of the following:-

A OCEAN: Designed for extended voyages where conditions may exceed wind force 8 (Beaufort scale) and significant wave heights of 4 m and above, and vessels largely self-sufficient.

B OFFSHORE: Designed for offshore voyages where conditions up to, and including, wind force 8 and significant wave heights up to, and including, 4 m may be experienced.

C INSHORE: Designed for voyages in coastal waters, large bays, estuaries, lakes and rivers where conditions up to, and including, wind force 6 and significant wave heights up to, and including, 2 m may be experienced.

D SHELTERED WATERS: Designed for voyages on small lakes, rivers, and canals where conditions up to, and including, wind force 4 and significant wave heights up to, and including, 0.5 m may be experienced.

The builder's plate will display a simple A, B, C or D as the case may be.

Maximum Persons Capacity

This gives the maximum number of persons, at an average of 75kg each, for which the boat has been designed and built. For example, the plate on a boat for 6 persons will display:-



Manufacturer's Recommended Maximum Load

This shows the boat's maximum recommended load including the number of persons and the weight of additional, carry on baggage, equipment and fuel, but excludes the weight of fuel and water in fixed tanks. For example:

6 [person icon] + [bag icon] = 660kg

The HIN (Hull Identification Number)

Additional to the builder's plate, every new boat will have a HIN marked in two places, one hidden and the other on the starboard transom.

From this you can tell:-



Owner's Manual

All new boats should be provided with an owner's manual. This will provide information on aspects of the boat such as:-

- The identity of the boat
- The meaning of the RCD design category with associated stability and loading data
- How the boat should be safely operated
- Where essential (including safety) equipment can be found
- How the boat and systems should be maintained
- The minimum weight required to right a boat susceptible to capsizing
- A declaration of conformity with the RCD

For More Information

Look on www.rya.org.uk *click on 'Technical'*

www.britishmarine.co.uk/html/publications.cfm
select 'Technical' from the category search

Or Contact

RYA Andrew Yates
Tel: 023 8062 7476
Email: andrew.yates@rya.org.uk

BMF Nigel Saw
Tel: 01784 223635
Email: nsaw@britishmarine.co.uk